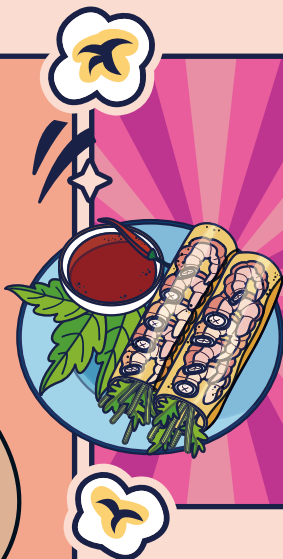


# 富市台中

Weathy Taichung

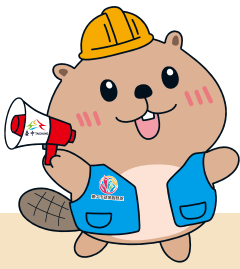


新住民就業  
資源簡介

Briefing of  
Employment resources  
for New Immigrants



中文/英文 English



# 2026

↪ Year of the Horse ↩

## JANUARY

Su	Mo	Tu	We	Th	Fr	Sa
			1	2	3	
4	5	6	7	8	9	10
11	12	13	14	15	16	17
18	19	20	21	22	23	24
25	26	27	28	29	30	31

## FEBRUARY

Su	Mo	Tu	We	Th	Fr	Sa
1	2	3	4	5	6	17
8	9	10	11	12	13	4
15	16	17	18	19	20	21
22	23	24	25	26	27	28

## MARCH

Su	Mo	Tu	We	Th	Fr	Sa
1	2	3	4	5	6	7
8	9	10	11	12	13	14
15	16	17	18	19	20	21
22	23	24	25	26	27	28
29	30	31				

## APRIL

Su	Mo	Tu	We	Th	Fr	Sa
		1	2	3	4	
5	6	7	8	9	10	11
12	13	14	15	16	17	18
19	20	21	22	23	24	25
26	27	28	29	30		

## MAY

Su	Mo	Tu	We	Th	Fr	Sa
					1	2
3	4	5	6	7	8	9
10	11	12	13	14	15	16
17	18	19	20	21	22	23
24	25	26	27	28	29	30
31						

## JUNE

Su	Mo	Tu	We	Th	Fr	Sa
	1	2	3	4	5	6
7	8	9	10	11	12	13
14	15	16	17	18	19	20
21	22	23	24	25	26	27
28	29	30				

## JULY

Su	Mo	Tu	We	Th	Fr	Sa
		1	2	3	4	
5	6	7	8	9	10	11
12	13	14	15	16	17	18
19	20	21	22	23	24	25
26	27	28	29	30	31	

## AUGUST

Su	Mo	Tu	We	Th	Fr	Sa
						1
2	3	4	5	6	7	8
9	10	11	12	13	14	15
16	17	18	19	20	21	22
23	24	25	26	27	28	29
30	31					

## SEPTEMBER

Su	Mo	Tu	We	Th	Fr	Sa
		1	2	3	4	5
6	7	8	9	10	11	12
13	14	15	16	17	18	19
20	21	22	23	24	25	26
27	28	29	30			

## OCTOBER

Su	Mo	Tu	We	Th	Fr	Sa
			1	2	3	
4	5	6	7	8	9	10
11	12	13	14	15	16	17
18	19	20	21	22	23	24
25	26	27	28	29	30	31

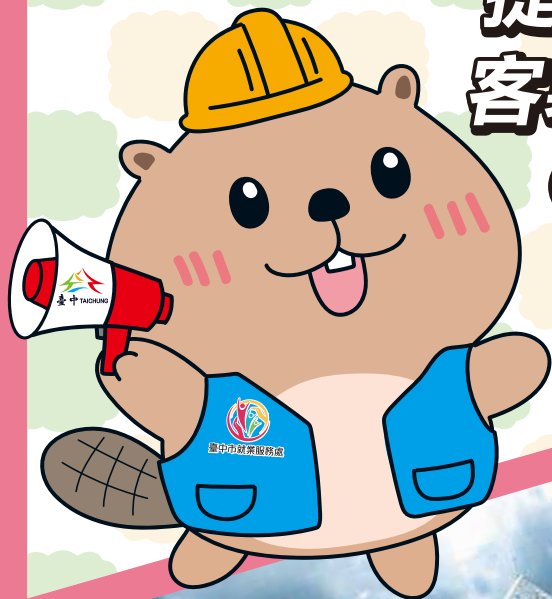
## NOVEMBER

Su	Mo	Tu	We	Th	Fr	Sa
1	2	3	4	5	6	7
8	9	10	11	12	13	14
15	16	17	18	19	20	21
22	23	24	25	26	27	28
29	30					

## DECEMBER

Su	Mo	Tu	We	Th	Fr	Sa
		1	2	3	4	5
6	7	8	9	10	11	12
13	14	15	16	17	18	19
20	21	22	23	24	25	26
27	28	29	30	31		

# 提供一案到底 客製化就業服務



## 服務對象

持有居留證之新住民，不須申請工作許可證，即可在臺工作。








服

務

內

容

-  職缺開發與推介媒合
-  求職面試陪同
-  就業後追蹤關懷
-  提供就業促進活動與措施
-  轉介社會福利資源

# 新住民 就業促進活動

## 產業職能 前導課程

提供職業訓練前的課程基礎介紹，以順利銜接職業訓練。

## 產業鏈工作坊

了解相關產業上下游作業方式，釐清求職方向，助您就業成功。



美髮造型



餐飲服務



零售服務



休閒旅宿



其他行業

### 參加對象

有就業需求的新住民

### 費用

完全免費

### 洽詢專線

(04)2229 0868 吳小姐

### 報名請掃我



就業服務  
一鍵Catch報名網

# 弱勢勞工 就業協助計畫

弱勢失業勞工經評估  
符合資格及推介就業  
· 工作滿三個月最高可領1萬2,000元。

## 補助對象： 弱勢勞工(求職者)

補助資格：設籍本市及外國人與設籍本市之國民結婚，且獲准居留者之弱勢勞工，經本局就業服務窗口辦理求職登記或接受服務有下列情況之一經濟困難者：

- (一)求職期間具積極求職動機。
- (二)就業初期(就業未滿二個月)。



## 補助期限/金額

- 1.生活補助：每人補助一次6,000元。
- 2.就業獎勵：(1)全時工作者，連續就業滿一個月，核發3,000元，滿三個月核發9,000元。  
(2)部分工時工作者，連續就業滿一個月核發1,500元，滿三個月核發4,500元。

豐原就業服務站 張小姐

(04)2527 1812 #分機333

沙鹿就業服務站 陳先生

(04)2623 1955 #分機125

臺中就業服務站 王小姐

(04)2222 5153 #分機132

洽辦單位及聯絡電話



# 缺工就業獎勵

經就服員開立「缺工就業獎勵推介卡」所推介的工作機會，經錄用並連續就業滿30日以上，只要穩定就業，每個月都有獎勵金可以領取。

## 補助對象：求職者

### 補助資格

勞工資格符合下列情形之一的失業勞工：

- 1 失業期間達30日以上。
- 2 非自願離職。
- 3 經公立就業服務機構評估推介。
- 4 願意從事照顧服務工作者(須檢附至少90小時之照顧服務員受訓結業證明或照顧服務員技術士證)或特定製程行業或特殊時程行業(即3K產業)者。

### 補助金額

### 補助期限：18個月

1 合計10萬8,000元

2 第1個月~第6個月

各5,000元/月

第7個月~第12個月

各6,000元/月

第13個月~第18個月

各7,000元/月

豐原就業服務站 黃小姐

(04)2527 1812 #分機211

沙鹿就業服務站 鍾小姐

(04)2623 1955 #分機121

臺中就業服務站 林小姐

(04)2222 5153 #分機229

洽辦單位及聯絡電話



# 臨時工作津貼

補助對象：求職者

## 補助資格：適用對象

- 1 非自願性離職者。
- 2 就業服務法第二十四條第一項各款所列之失業者（包括：獨力負擔家計者、中高齡者、身心障礙者、原住民、低收入戶、中低收入戶、長期失業者、二度就業婦女、家庭暴力被害人、更生受保護人、其他經中央主管機關認為有必要者）。
- 3 前項人員須具有工作能力與工作意願者，求職登記14日仍未能推介就業，將評估協助申請臨時工作津貼。

針對就業能力薄弱之失業者（就業保險被保險人），提供短期就業安置措施，以協助其提升職場環境適應能力及返回一般就業市場。

## 補助期限/金額

- 1 補助金額：依中央主管機關公告每小時基本工資核給，且每月合計不超過月基本工資。
- 2 補助期限：最長6個月。
- 3 補助限制：2年內合併領取就業促進津貼實施辦法之臨時工作津貼或政府機關其他同性質津貼，最長以6個月為限。



豐原就業服務站 羅小姐

(04)2527 1812 #分機102

沙鹿就業服務站 陳小姐

(04)2623 1995 #分機123

臺中就業服務站 鍾小姐

(04)2222 5153 #分機128

洽辦單位及聯絡電話



# 職場學習 及再適應計畫

為協助就業弱勢者就業準備及就業適應，透過事業單位或團體，提供職場學習及再適應之機會，使其重返職場，讓弱勢求職者順利就業。



## 補助期限/金額

經公立就業服務機構推介參與職場學習及再適應，執行職場學習及再適應津貼期間最長為3個月，期間補助個案職場學習津貼、用人單位管理訓練津貼，補助標準如下：

- (一) 個案職場學習及再適應津貼：按中央主管機關公告之每小時基本工資核給，且不超過每月基本工資。
- (二) 用人單位行政管理及輔導費：以實際核發職場學習及再適應津貼金額之百分之三十核給。

豐原就業服務站 江小姐

(04)2527 1812 #分機324

沙鹿就業服務站 顏小姐

(04)2623 1995 #分機305

臺中就業服務站 梁小姐

(04)2222 5153 #分機227

洽辦單位及聯絡電話



# 更多就業服務資源



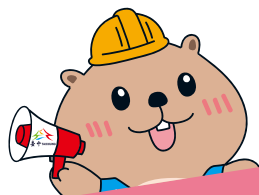
就業服務據點



台中就業網



臺灣就業通



## 臺中市新住民 服務資源



臺中市新住民  
資訊網



臺中市新住民  
教育資源網



臺中市婦女及  
新住民培力中心

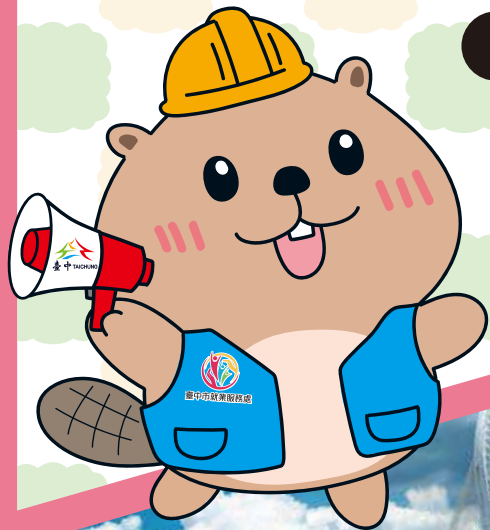
■ 臺中市就業服務處：(04)2228 9111 #分機36200

■ 防制就業歧視諮詢專線：(04)2228 9111 #分機35600

■ 求職防騙諮詢專線：(04)2228 9111 #分機35600

■ 勞工權益/勞資爭議諮詢專線：(04)2228 9111 #分機35200

# Providing comprehensive employment services



## Service object

Immigrants who have got Alien Resident Certificate (ARC) without applying for a work permit can work in Taiwan.

## Service content

-  Job search service & matchmaking employment.
-  Support to accompany during job interview.
-  Follow up and take cares after being recruited.
-  Provide employment promotion activities and measures.
-  Share social welfare resources



# Employment Promotion Activities For New Immigrants

## Industrial Function Pre-course

Providing basic introduction of overview knowledge before being specialized vocational training, then more convenient for training.

## Industry Chain Workshop

Helping you understand the operating methods and work processes thoroughly, thereby clarifying the direction of job hunting, and assistant to find out your own ideal job.



Hair Styling



Food & Beverage service



Retail Services



Leisure Hospitality



Other Industry

### Target participants

Immigrants in need of employment

### Expenses

Completely free of charge

### Inquiry hotline

(04)2229 0321, Ms. Wu

Please scan the QR code to register



Taichung Employment Service "One-Click Catch" Registration Website

# Disadvantaged Workers Employment Assistance Program

Disadvantaged unemployed workers who are assessed as eligible and recommended for employment can receive up to NT\$12,000 after working for three months.

## Subsidized Object: Disadvantaged workers (job seekers)

Eligibility for subsidy : Disadvantaged workers who are registered in this city and foreigners who are married to nationals of this city and are allowed to reside, who register for employment through the employment service window of this bureau or receive services and who have financial difficulties under the following circumstances :

- (1) Have a positive motivation for job hunting
- (2) Being in the early stages of working  
(less than two months of employment)



## Subsidy period/amount

1. Living allowance : Each person is given a one-time subsidy of 6,000 TWD

2. Employment rewards :

- (1) For full-time workers: People will receive 3,000 TWD for 01 continuously working month and 9,000 TWD for 03 continuously working months.
- (2) For part-time workers: People will receive 1,500 TWD for 01 continuously working month and 4,500 TWD for 03 continuously working months.

### Fengyuan Employers Service Station

(04)2527 1812

#Extension 333, Ms. Zhang

### Shalu Employment Service Station

(04)2623 1955

#Extension 125, Mr. Chen

### Taichung City Employment Service Office

(04)2222 5153

#Extension 132, Ms. Wang

Contact us and  
phone number



# Reward subsidy for underemployment industries

Job opportunities recommended by employment service staff through the "Reward subsidy for underemployment industries promotion card", if being hired and been employed continuously for more than 30 days, as long as employment is stable, job seekers can receive monthly reward subsidy.

## Subsidized Object: Job seekers

### Eligibility for subsidy

Unemployed workers whose labor qualifications meet one of the following circumstances

- 1 Unemployment period reaches more than 30 days
- 2 Involuntary resignation.
- 3 Being evaluated and recommended by public employment service agencies.
- 4 Those who are willing to work as health care service staffs (must submit at least 90 hours of health care service training completion certificate or health care service technician certificate) or specific process industries or special schedule industries (i.e. 3K industries)

### Subsidy amount

**Period: 18 months**

1 total 108,000 TWD

2 From the 1<sup>st</sup> month to the 6<sup>th</sup> month

5,000 TWD/person/month

From the 7<sup>th</sup> month to the 12<sup>th</sup> month

6,000 TWD/person/month

From the 13<sup>th</sup> month to the 18<sup>th</sup> month

7,000 TWD/person/month

### Fengyuan Employment Service Station

(04)2527 1812

#Extension 211, Ms. Huang

### Shalu Employment Service Station

(04)2623 1955

#Extension 121, Ms. Zhong

### Taichung City Employment Service Office

(04)2222 5153

#Extension 229, Ms. Lin

Contact us and phone number



# Temporary Work Allowance

**Subsidized Object: Job seekers**

## Eligibility for subsidy Applicable Object

- 1 Involuntary resignation.
- 2 These unemployments are listed in Paragraph 1, Article 24 of Employment Service Act (including: Persons who financially support families alone; Senior or mid-aged persons; The disabled; Indigenous peoples; Persons with working capacity but from medium or low-income families; Persons who are long-term unemployed; Re-employment for displaced women; Victims of domestic violence; Rehabilitated ex-convicts; Other persons qualified for this purpose as deemed by the central competent authority.)
- 3 If these objects in the preceding paragraph owing ability and willingness to work are still unable to be recommended for a job within 14 days of job registration, they will be evaluated and assisted in applying for temporary work allowance.

For the unemployed who do not having enough of employment ability (employment insurance insured persons), provide short-term employment placement measures to help them improve their adaptability to the workplace environment and return to the general job market.

## Subsidy period/amount

- 1 Subsidy amount: based on the hourly basic wage announced by the central competent authority, and the total in one month shall not exceed the monthly basic wage.
- 2 Subsidy period: maximum 6 months.
- 3 Restrictions of subsidy: Within 2 years, he temporary work allowance or other subsidies of the same nature from government agencies shall be combined with the Employment Promotion Subsidy Implementation Measures, with a maximum limit of 6 months.



**Fengyuan Employment Service Station**

(04)2527 1812  
#Extension 102, Ms. Luo

**Shalu Employment Service Station**

(04)2623 1955  
#Extension 123, Ms. Chen

**Taichung City Employment Service Office**

(04)2222 5153  
#Extension 128, Ms. Zhong

**Contact us and  
phone number**



# Job Training And Readjustment Program

In order to assist the disadvantaged in employment preparation and employment adaptation, through public organizations or groups, this program provides opportunities of job training and readjustment so that they can return to the workplace as well as allow disadvantaged job seekers to successfully find employment.



## Subsidy period/amount

After being recommended by the public employment service agency to participate in Job Training And Readjustment Program, the maximum period for implementing job training and readjustment subsidy is 3 months. During this period, individual cases of workplace learning subsidy and employer management training subsidy standards are as follows:

- (1) Workplace learning and re-adaptation allowance for individual cases: The allowance shall be based on the hourly basic wage announced by the central competent authority, and shall not exceed the monthly basic wage.
- (2) Administrative management and counseling fees for employers: 30% of the actual issued workplace learning and readjustment allowance amount.

### Fengyuan Employment Service Station

(04)2527 1812

#Extension 324, Ms. Jiang

### Shalu Employment Service Station

(04)2623 1955

#Extension 305, Ms. Yan

### Taichung City Employment Service Office

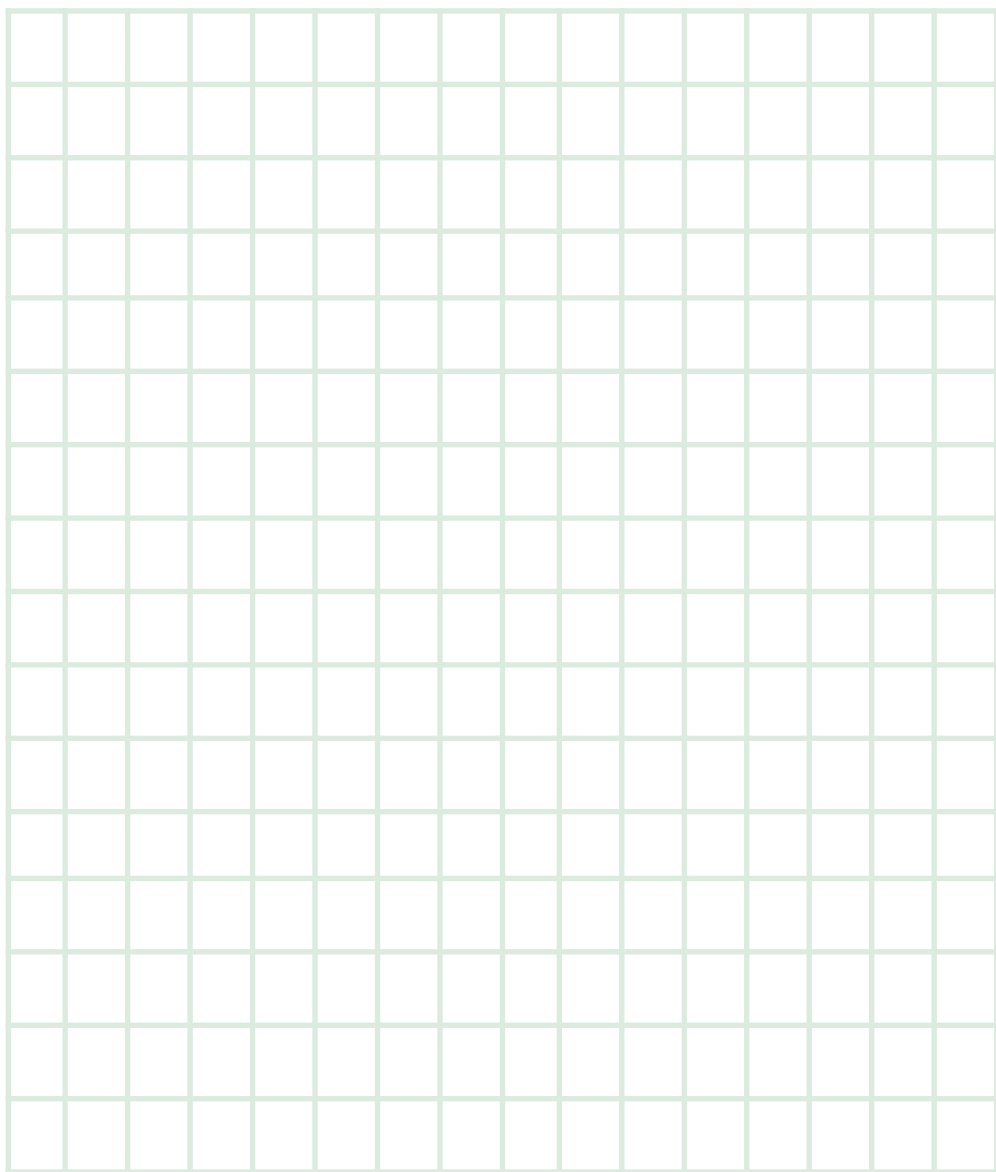
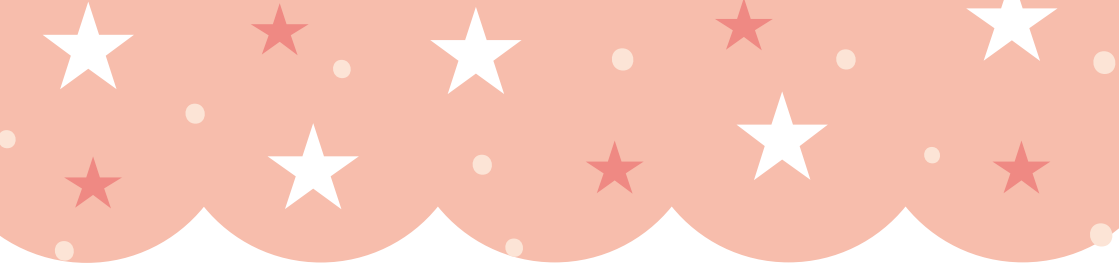
(04)2222 5153

#Extension 227, Ms. Liang

Contact us and  
phone number







# Blank blue header box

•

•

•

•

•

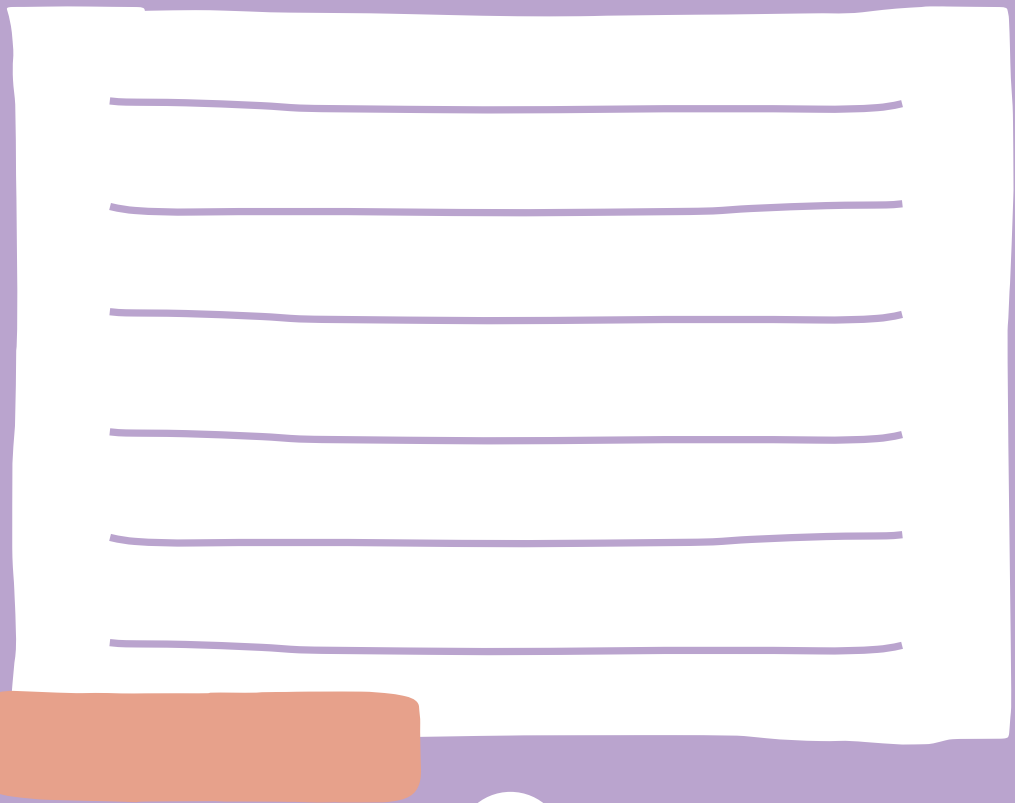
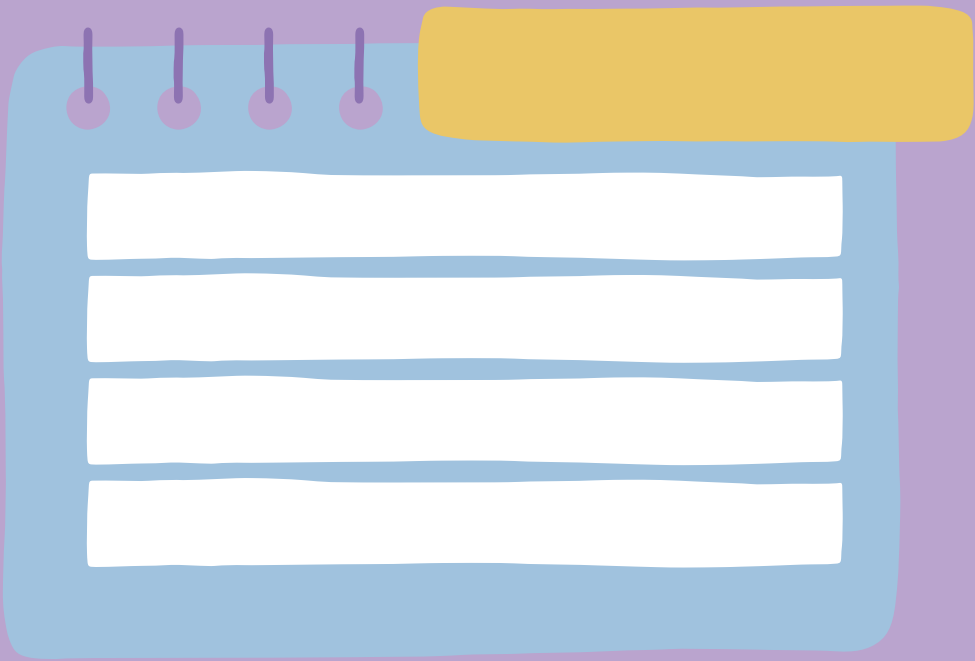
•

•

•

•

•





1.

2.

3.

4.

5.

6.

7.

8.

9.

10.

11.

12.





# Employment Service Resources



List of employment  
service locations



Job Information  
in Taichung



Job Information  
in Taiwan



## Service Resources for New Immigrants in Taichung City



Information Website  
for New Immigrants  
in Taichung



Education Information  
Website for New  
Immigrants in Taichung



Taichung Women  
and New Immigrants  
Training Center

- Taichung City Employment Service Office:  
(04)22289111, extension 36200

---

- Prevention of Employment Discrimination Consultation Hotline:  
(04)22289111, extension 35600

---

- Prevention of Job Fraud Consultation Hotline:  
(04)22289111, extension 35600

---

- Labor rights/Labor and Capital Consultation Hotline:  
(04)22289111, extension 35200

---



指導單位：勞動部勞動力發展署、臺中市政府勞工局  
主辦單位：臺中市就業服務處  
承辦單位：社團法人台灣新移民協會

Guiding: Ministry of Labor Workforce Development Agency,  
Labor Affairs Bureau of Taichung City Government  
Sponsor: Taichung City Employment Service Office  
Organizer: Taiwan Immigrant Association

勞動部115年就業安定基金補助

廣告

Subsidized by Employment Security Fund of Ministry of Labor in 2026 Advertisement

此內容(包含封面封底)所有使用風景照片皆為Copyright © 2021 臺中市政府觀光旅遊局 版權所有